



IPRO View

**Setting Image Viewing Standards
Since 1989**



IPRO's Mission Statement: Increase our Customers Profitability and Put Them in a Position to Win.

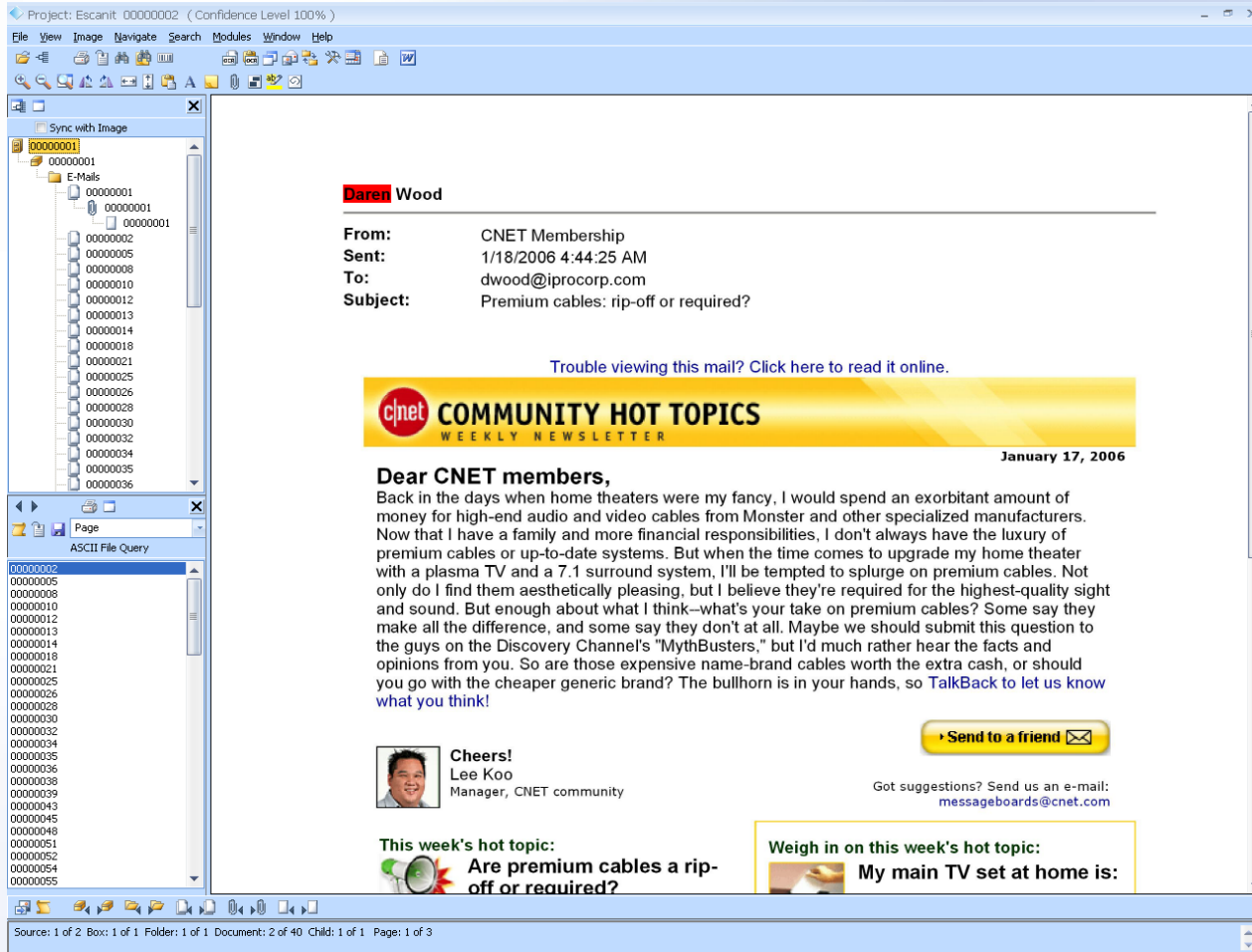
- Is your case on the “fast track”?
- Do you want to selectively code documents after review?
- Would you like to take a quick look at the extracted text and the native file?
- IPRO View has continued to set the standard for image viewers by giving you the tools you have told us you need.



Full Text Searching

- Do you need to look for relevant documents before your coding is complete?
- If your images are scanned and then OCR'd with IPRO OCR, you have full text searching capabilities shortly after scanning is completed.
- If you extract the text with eScan-IT or eCapture, you can load the data into IPRO View, search the text and view the Native File.

Text Search Results



Project: EscanIt_00000002 (Confidence Level 100%)

File View Image Navigate Search Modules Window Help

Sync with Image

00000001

E-Mails

00000001

00000001

00000001

00000002

00000005

00000008

00000010

00000012

00000013

00000014

00000018

00000021

00000025

00000026

00000028

00000030

00000032

00000034

00000035

00000036

Page

ASCII File Query

00000002

00000005

00000008

00000010

00000012

00000013

00000014

00000018

00000021

00000025

00000026

00000028

00000030

00000032

00000034

00000035

00000036

00000038

00000039

00000043

00000045

00000048

00000051

00000052

00000054

00000055

Source: 1 of 2 Box: 1 of 1 Folder: 1 of 1 Document: 2 of 40 Child: 1 of 1 Page: 1 of 3

Daren Wood

From: CNET Membership
Sent: 1/18/2006 4:44:25 AM
To: dwood@iprocorp.com
Subject: Premium cables: rip-off or required?


[Trouble viewing this mail? Click here to read it online.](#)


cnet COMMUNITY HOT TOPICS
WEEKLY NEWSLETTER

January 17, 2006


Dear CNET members,


Back in the days when home theaters were my fancy, I would spend an exorbitant amount of money for high-end audio and video cables from Monster and other specialized manufacturers. Now that I have a family and more financial responsibilities, I don't always have the luxury of premium cables or up-to-date systems. But when the time comes to upgrade my home theater with a plasma TV and a 7.1 surround system, I'll be tempted to splurge on premium cables. Not only do I find them aesthetically pleasing, but I believe they're required for the highest-quality sight and sound. But enough about what I think—what's your take on premium cables? Some say they make all the difference, and some say they don't at all. Maybe we should submit this question to the guys on the Discovery Channel's "MythBusters," but I'd much rather hear the facts and opinions from you. So are those expensive name-brand cables worth the extra cash, or should you go with the cheaper generic brand? The bullhorn is in your hands, so [TalkBack to let us know what you think!](#)

 [Send to a friend](#)

 **Cheers!**
Lee Koo
Manager, CNET community

Got suggestions? Send us an e-mail:
messageboards@cnet.com

This week's hot topic:
 **Are premium cables a rip-off or required?**

Weigh in on this week's hot topic:
 **My main TV set at home is:**

View Extracted Text and Native File

Project: Data_Only_OF IPRO-DE-0000044

File View Image Navigate Search Modules Window Help

Copy of QUOTE # HT11173 2nd revision.DOC [Compatibility Mode] - M Table Tools

Home Insert Page Layout References Mailings Review View Add-Ins Design Layout

Clipboard Paste Font Paragraph Styles Editing Share As Application Settings WebEx WebEx

GENERAL FASTENERS COMPANY
 QUOTATION No. HT11173
 2nd Revision
 11820 GLOBE RD. LIVONIA, MI 48150-1180
 PHONE: (734) 452-2400 x 2262
 TELEFAX QUOTATIONS: (734) 591-9574

TO ARVIN/MERITOR
 Attention: EMILY LI
 TROY, MI. 48084-7186
 DATE: 9/23/04
 F.O.B.: SHIPPING POINT
 TERMS: 15th ULTIMO + SPECIAL
 DELIVERY: see below
 THANK YOU FOR YOUR INQUIRY OF:

2135 WEST MAPLE RD.

NO. QUANTITY DESCRIPTION PRICE

33,600 pcs E.A.U.

P/N 1229-M-4979
 Quoting a TYPE "A" wide (USS) pattern 7/8 plain washer
 10,000 pcs. Min Fab & Ship to Release
 APPROX. 325 pcs. PER CARTON
 LEAD TIME IS 10 weeks
 Made from non-specific carbon steel

GENERAL FASTENERS COMPANY
 QUOTATION No. HT11173
 2nd Revision

11820 GLOBE RD. LIVONIA, MI 48150-1180
 PHONE: (734) 452-2400 x 2262
 TELEFAX QUOTATIONS: (734) 591-9574

TO	DATE:	F.O.B.:	TERMS:	DELIVERY:
ARVIN/MERITOR Attention: EMILY LI 2135 WEST MAPLE RD. TROY, MI. 48084-7186	9/23/04	SHIPPING POINT	15th ULTIMO + SPECIAL	see below

QUANTITY	DESCRIPTION	NO.	PRICE
33,600 pcs E.A.U.	P/N 1229-M-4979 Quoting a TYPE "A" wide (USS) pattern 7/8 plain washer 10,000 pcs. Min Fab & Ship to Release APPROX. 325 pcs. PER CARTON LEAD TIME IS 10 weeks Made from non-specific carbon steel		\$.2338 E.A.

Page: 1 of 2 Words: 209 70%

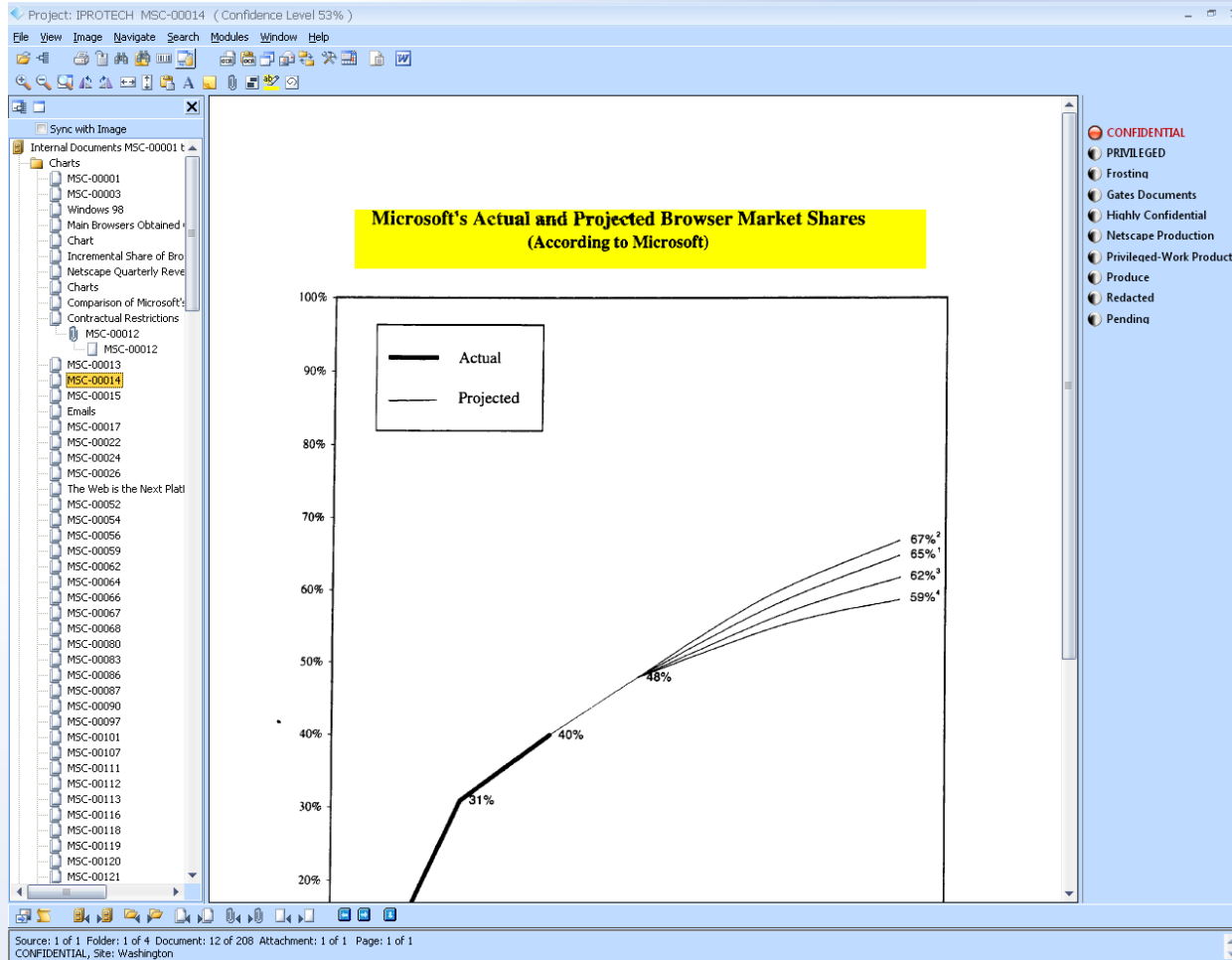
Box: 1 of 1 Folder: 1 of 1 Document: 44 of 105 Child: 1 of 1 Page: 1 of 1 Record #: 1718



Tagging/Issue Coding

- Issue Code your documents as soon as scanning is completed.
- Tag documents for discovery requests.
- Search images for tag/issue collections.

The Tag Palette





Redactions

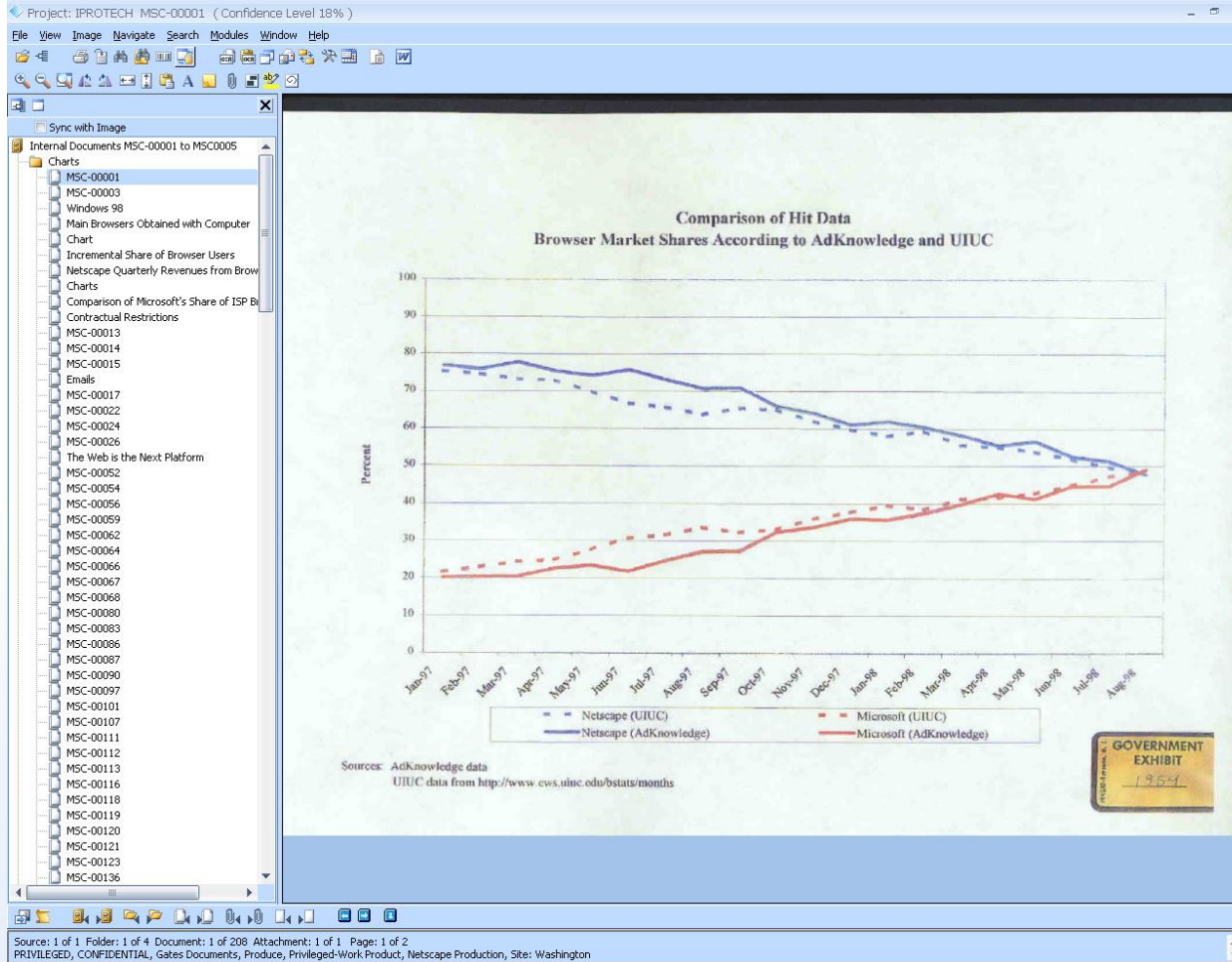
- Do you need a second pass through of redacted documents?
- IPRO View's redaction can be displayed with the underlying text viewable to the review team.
- Printing or producing the redacted document masks the redacted information even though the viewing option is different.



The Boundary Window

- IPRO View's project boundary window is unique to IPRO software.
- Organize your collection by Source, Box, Folders, Documents and Attachments.
- Allows for quick navigation to desired box or folder for document location.
- Add folder and/or document descriptions that are displayed in the boundary window.

Boundary Window View

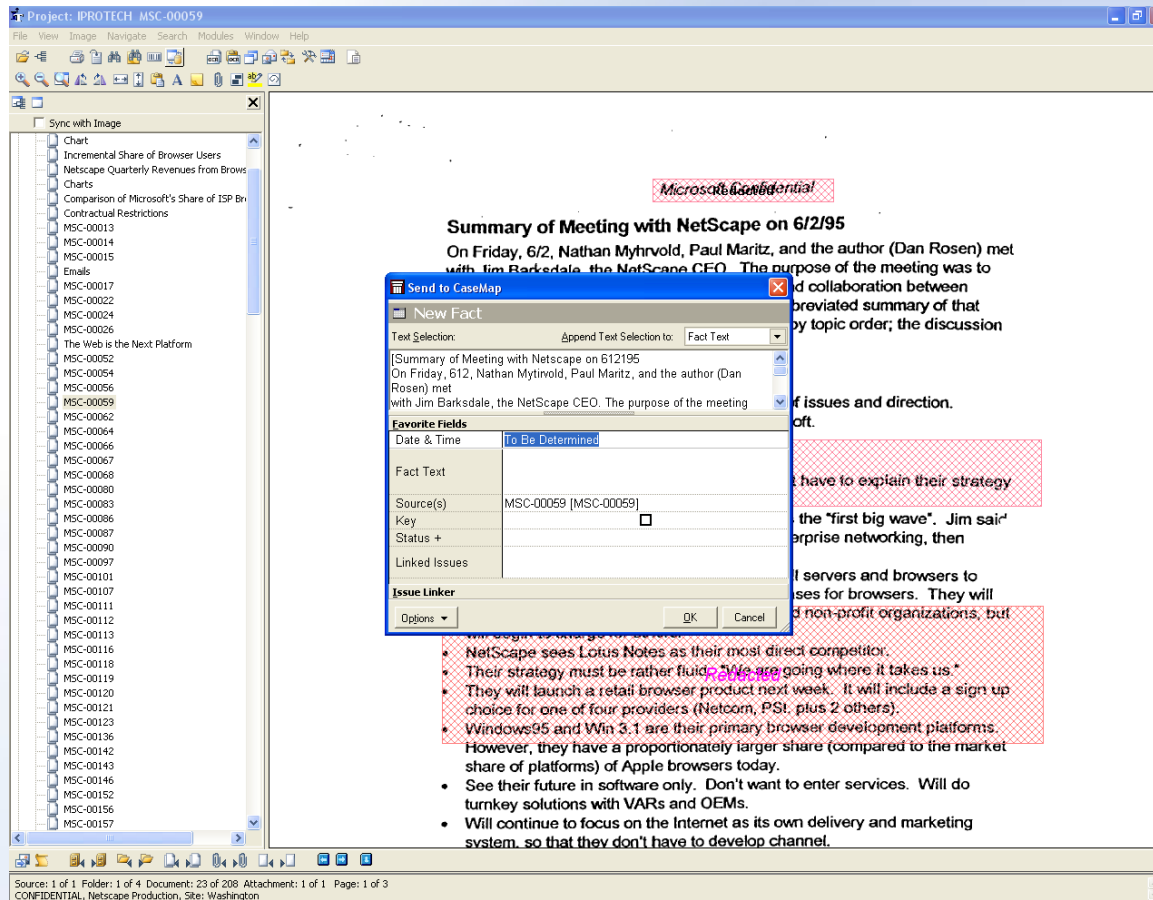




OCR on the Fly

- What if I find a paragraph or sentence that is significant?
- IPRO View's Zonal OCR allows you to “draw” the area you would like to OCR.
- Send the OCR text to CaseMap or paste the text into a database field or word processing document.

Zonal OCR & CaseMap



The screenshot displays the IPRO CaseMap application window titled "Project: IPROTECH MSC-00059". The interface includes a menu bar (File, View, Image, Navigate, Search, Modules, Window, Help) and a toolbar. On the left, a "Sync with Image" sidebar lists various document components such as "Chart", "Incremental Share of Browser Users", "Netscape Quarterly Revenues from Browsers", "Charts", "Comparison of Microsoft's Share of ISP Br", "Contractual Restrictions", and a series of MSC-00013 through MSC-00157. The main workspace shows a document with a "Microsoft Confidential" watermark and a title "Summary of Meeting with NetScape on 6/2/95". A "Send to CaseMap" dialog box is open, featuring a "New Fact" section with a "Text Selection" field containing the meeting summary text. Below this are fields for "Favorite Fields" (Date & Time: To Be Determined, Fact Text), "Source(s)" (MSC-00059 [MSC-00059]), "Key", "Status +", and "Linked Issues". An "Issue Linker" section is also present. The document text includes a bulleted list of points about NetScape's strategy and market position. The status bar at the bottom indicates "Source: 1 of 1 Folder: 1 of 4 Document: 23 of 208 Attachment: 1 of 1 Page: 1 of 3 CONFIDENTIAL, Netscape Production, Site: Washington".

Microsoft Confidential

Summary of Meeting with NetScape on 6/2/95

On Friday, 6/2, Nathan Myhrvold, Paul Maritz, and the author (Dan Rosen) met with Jim Barksdale, the NetScape CEO. The purpose of the meeting was to discuss collaboration between Netscape and Microsoft. The following is a brief summary of that meeting by topic order; the discussion covered the following issues and direction.

- Netscape sees Lotus Notes as their most direct competitor.
- Their strategy must be rather fluid. "We are going where it takes us."
- They will launch a retail browser product next week. It will include a sign up choice for one of four providers (Netcom, PSI, plus 2 others).
- Windows95 and Win 3.1 are their primary browser development platforms. However, they have a proportionately larger share (compared to the market share of platforms) of Apple browsers today.
- See their future in software only. Don't want to enter services. Will do turnkey solutions with VARs and OEMs.
- Will continue to focus on the Internet as its own delivery and marketing system, so that they don't have to develop channel.

Source: 1 of 1 Folder: 1 of 4 Document: 23 of 208 Attachment: 1 of 1 Page: 1 of 3
CONFIDENTIAL, Netscape Production, Site: Washington



Email a Document

- Would you like to share an imaged document with co-counsel or a co-worker?
- Would you like to include your annotations on the image?
- IPRO View supports emailing a document within the application. Pick and choose what annotations you would like to include and a PDF will be created and attached to the recipient's email.

Email a PDF

The screenshot shows a software window titled "Project: IPROTECH MSC-00068". The interface includes a menu bar (File, View, Image, Navigate, Search, Modules, Window, Help) and a toolbar. On the left, a "Sync with Image" pane lists various project files, including "MSC-00001" through "MSC-00123". The main area displays an email draft with the following fields:

- From:** Bill Gates
- Sent:**
- To:**
- Cc:**
- Subject:**

The email body contains the following text:

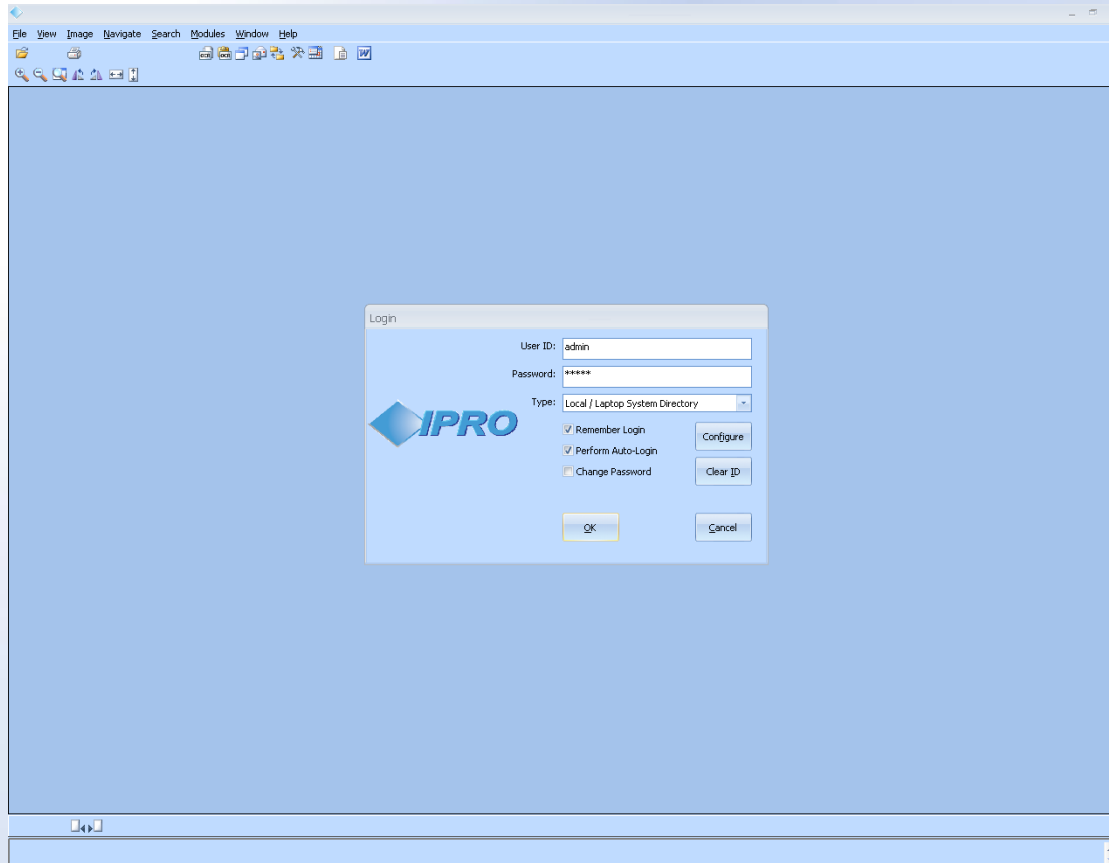
- Per my last email
- Two key executives
- 1) Jim Barak and Andersen. a relationship
- 2) The IBM relationship
- I'd appreciate your help
- Dan

A "0609NETS.DOC" attachment is visible at the bottom of the email body. A "Print Image" dialog box is open over the email content, with the following settings:

- Print Range:** Entire Document
- Printer Type:** Standard Windows Print Driver
- Print Options:** Print Image Key, Indicate Boundaries, Print Doc Separator Sheets, Print TAG Descriptions, Print Embedded Text, Print Info Only Fields, Print Markups, Print Sticky Notes, Print Highlights, Print Redactions, Black, White, Colored, Print Clip Paths, Include OCR, Allow Color Annotations.
- Print Quality:** Draft Quality
- Buttons:** Email, Cancel

At the bottom of the window, a status bar displays: "Source: 1 of 1 Folder: 1 of 4 Document: 28 of 208 Attachment: 1 of 3 Page: 1 of 1 CONFIDENTIAL, Produce, Highly Confidential, Privileged-Work Product, Netscape Production, Site: Washington".

Local/LAN/Remote





And in Conclusion...

- View and support for single and multi-page tiffs, color images and PDF files all in the same collection.
- Run IPRO View locally, over the network or remotely.
- Link IPRO View to any database application.
- End-users learn one image viewer allowing for one image repository no matter what database is being used.
- Jump start your billable review with IPRO View!