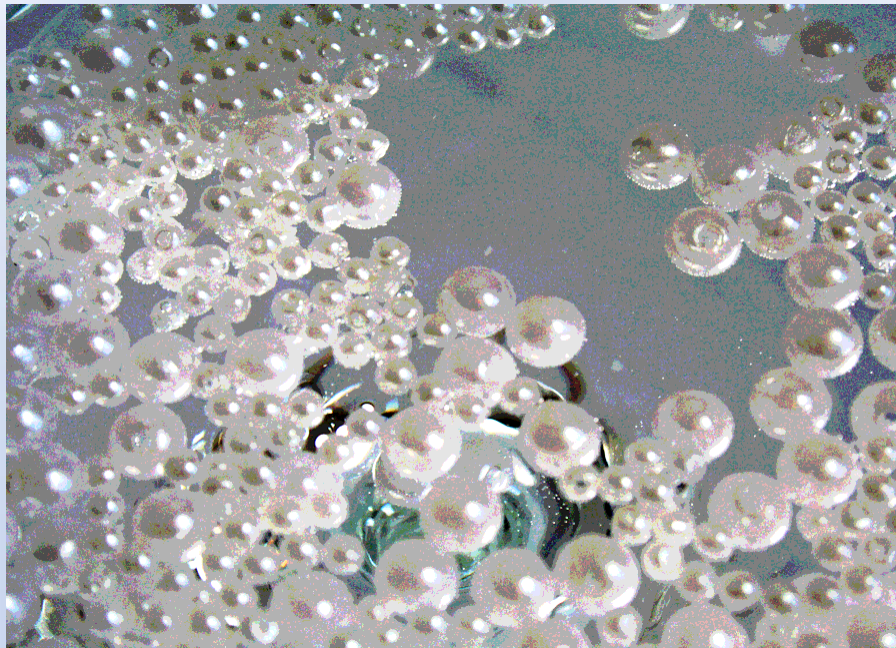


# IPRO PEARLS

A look at several IPRO Utility programs





# Tap Manip and Tag QC

- Function of the Tools
  - Tag Manipulation > Advanced Tag Searches
    - Merge Logic
    - Output Formats
  - Tag Quality Control > Set/Remove/Validate
    - Input Type
    - Processing Options

Process TAGS...



# Tag Manip and Tag QC

- Tag Manipulation
  - Results cannot be found in IPRO View
  - Can apply a tag to results, no LFP required
- Tag Quality Control
  - Faster than manually tagging
  - No need to create an LFP to set or remove tags
  - Prepares collection for endorsing Tags



# Verify Images

- Function
  - Generates a report of image information from a designated IPRO project
- Verify Images
  - Images Processed
  - Black and white images
  - Color Images
  - TIFF images
  - JPEG images
  - PDF images
- Find Color
  - Images Processed
  - Color Images





# Move Tiffs

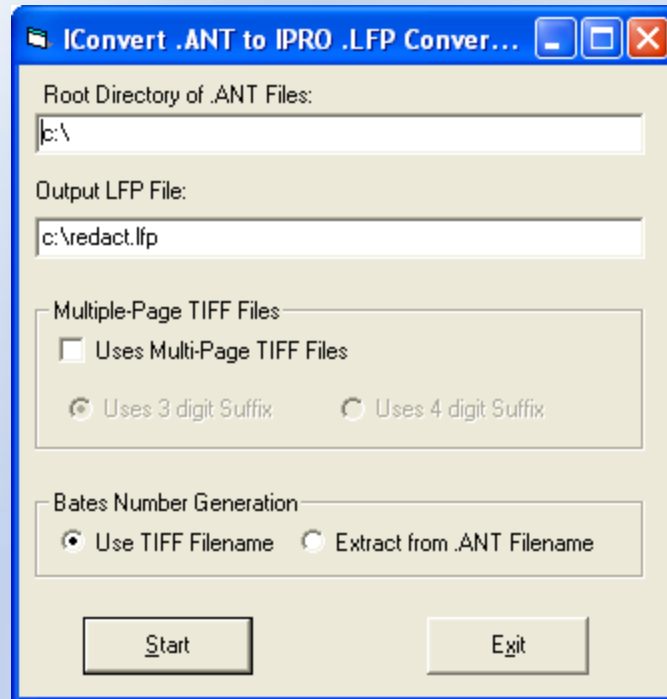
- Function
  - Move images to a custom directory structure
- Requirements
  - IPRO LFP to locate images
  - Fielded.txt for new directory structure





# ANT to LFP

Converts ANT files to an IPRO LFP





# Options

- Root Directory
  - Directory where .ANT files reside
- Output LFP File
  - Directory and name of LFP to be created
- Multi-Page TIFF Files
  - Allows for the use of Multi-Page TIFF files
    - Allows suffix options if desired
- Bates Number Generation
  - Use TIFF File Name
  - Extract from .ANT Filename



# Diagnostic Tools

## Database Integrity Check

- Function
  - Checks databases for corruption
  - Options
    - Database Health (without or with record)
    - Check for missing images, missing OCR or locked images





# Diagnostic Tools

## Database Repair

- Function
  - Repairs corrupt databases
  - Options
    - System Databases
      - All users must be logged out of the IPRO Suite
    - Project Databases
      - All users must be logged out of the project

# SCREATE



- Generates Custom Summation DII File
  - Moves OCR text Files
  - Renames Tiffs
  - Includes Custom Coding Data



# Options

- Style

- New (full path per Doc)

@D @V VOL01:\Images

0001.TIF

0002.TIF

- Old (full path per Page)

@D @V VOL01:

Images\0001.TIF

Images\0002.TIF

- Fields to Include

- OCR
- Begin Doc
- End Doc
- Page Count
- Has Image
- Box Number (IO Field 1)
- DocID
- ParentID
- AttachID
- Attach Range
- BatesBeg and BatesEnd



# Requirements

- IPRO LFP
  - IM commands
  - IO commands if using Box Number option
- OCR
  - OCR Log file
  - Text cannot be in same path as images
- Fielded Text Info
  - Comma/quote delimited
  - Must include Beg Doc Key



# Output

- SUMM folder in location of LFP file
  - Contains DII and OCR Log files if OCR included
- OCR files moved to TIFF location





Thank you

